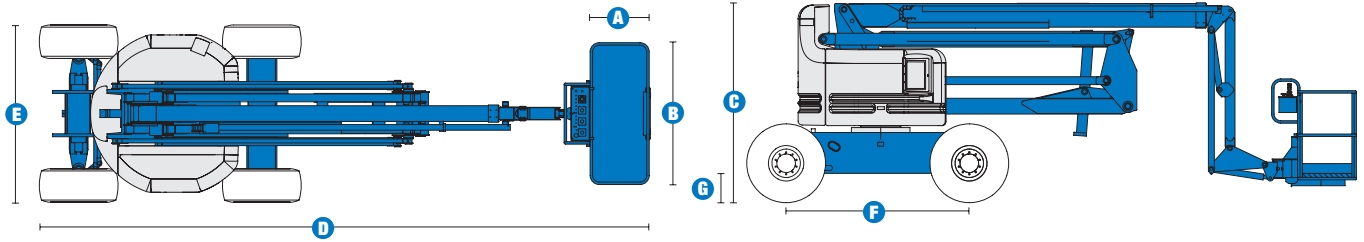


# Specifications



## MODEL Z™-60/34

MEASUREMENTS	Metric	US
Working height maximum*	20.39 m	66 ft 4 in
Platform height maximum	18.39 m	60 ft 4 in
Horizontal reach maximum	11.05 m	36 ft 3 in
Up-and-over clearance maximum	8.23 m	27 ft
<b>A</b> Platform length - 6 ft / 8 ft model	76 cm / 91 cm	2 ft 6 in / 3 ft
<b>B</b> Platform width - 6 ft / 8 ft model	1.83 m / 2.44 m	6 ft / 8 ft
<b>C</b> Height - stowed	2.69 m	8 ft 10 in
<b>D</b> Length - stowed	8.15 m	26 ft 9 in
<b>E</b> Width	2.46 m	8 ft 1 in
<b>F</b> Wheelbase	2.51 m	8 ft 3 in
<b>G</b> Ground clearance - centre	41 cm	1 ft 4 in

## PRODUCTIVITY

Lift capacity	227 kg	500 lbs
Platform rotation	180°	180°
Turntable rotation	360° continuous	
Turntable tailswing	zero	zero
Drive speed - stowed	4.8 km/h	3.0 mph
Drive speed - raised**	1.1 km/h	0.68 mph
Gradeability - 2WD***	25%	25%
Gradeability - 4WD***	40%	40%
Turning radius - inside	3.05 m	10 ft 1 in
Turning radius - outside	6.07 m	19 ft 11 in
Controls	12 V DC proportional	
Tyres	385/65 D19.5, 12 ply	

## POWER

Power source	Deutz D 2011 L03i cylinder diesel 48 hp (35.8 kW) Ford DSG-423 4 cylinder petrol/LPG 75 hp (56 kW) Perkins 404D-22 4 cylinder diesel 51 hp (38 kW)	
Auxiliary power unit	12 V DC	12 V DC
Hydraulic tank capacity	170.3 L	45 gal
Fuel tank capacity	75.7 L	20 gal

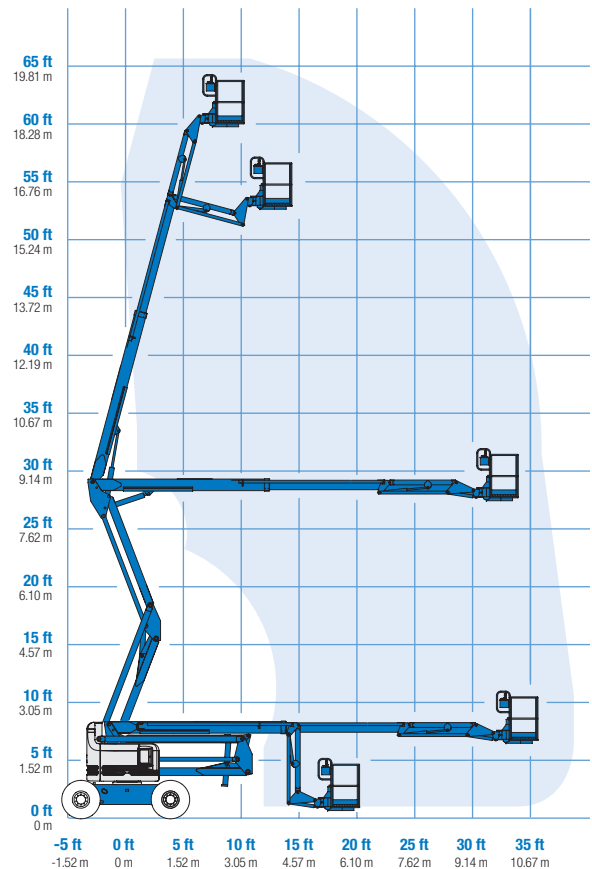
## WEIGHT\*\*\*\*

CE (air tyres)	10,215 kg	22,520 lbs
CE (foam filled tyres)	11,331 kg	24,980 lbs

## STANDARDS COMPLIANCE CE EN280, PB-10-611-03

\* The metric equivalent of working height adds 2 m to platform height. U.S. adds 6 ft to platform height.  
 \*\* In lift mode (platform raised), the machine is designed to operate on firm, level surfaces only.  
 \*\*\* Gradeability applies to driving on slopes. See Operator's Manual for details regarding slope ratings.  
 \*\*\*\* Weight will vary depending on options and/or country standards.

## RANGE OF MOTION Z™-60/34



## Features

### EASILY CONFIGURED TO MEET YOUR NEEDS

#### PLATFORM OPTIONS

- Steel 2.44 m (8 ft) (standard)
- Steel 1.83 m (6 ft)
- 2.44 m (8 ft) tri-entry
- 1.83 m (6 ft) tri-entry

#### JIB

- Standard 1.83 m (6 ft) jib boom

#### POWER OPTIONS

- Deutz 48 hp (35.8 kW) diesel
- Ford petrol/LPG 75 hp (56 kW)
- Perkins diesel 51 hp (38 kW)

#### DRIVE OPTIONS

- 2 x 4
- 4 x 4

#### AXLE OPTIONS

- Oscillating (standard on 4WD)
- Non-oscillating

#### TYRE OPTIONS

- Rough terrain air-filled (standard)
- Rough terrain foam-filled
- Rough terrain non marking (air or foam-filled)

### STANDARD FEATURES

#### MEASUREMENTS

- 20.39 m (66 ft 4 in) working height
- 11.05 m (36 ft 3 in) horizontal reach
- 8.23 m (27 ft) up and over clearance
- Up to 227 kg (500 lb) lift capacity

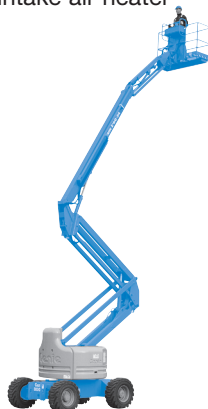
#### PRODUCTIVITY

- Self-levelling platform
- Hydraulic platform rotation
- Fully proportional controls
- Thumb rocker steer
- Drive enable
- AC power to platform
- Horn
- Hour meter
- Tilt alarm
- Descent alarm
- 360° continuous turntable rotation
- Locking turntable covers
- Zero tailswing
- Positive traction drive
- 2 speed wheel motors
- Certified load sensor

### STANDARD FEATURES cont.

#### POWER

- All engines are emissions compliant
- 12 V DC auxiliary power
- Engine protection package
- Anti-restart engine protection
- Auto engine fault shutdown
- Deutz intake air heater



### OPTIONS & ACCESSORIES

#### PRODUCTIVITY

- Platform swing gate
- Half mesh platform inserts with swing gate
- Platform top auxiliary rail
- Hydraulic oil cooler
- Air line to platform
- Fire resistant hydraulic oil
- Biodegradable hydraulic oil
- Deluxe aircraft protection package
- Basic hostile environment kit
- Deluxe hostile environment kit
- Tool tray
- Fluorescent tube caddy
- Pipe cradle (pair)
- Alarm package (flashing beacon and travel alarm)
- Panel cradle package\*
- Platform work lights
- Front driving lights
- Lockable platform control box covers
- Weld leads to platform

#### POWER

- Engine gauge package
- AC generator packages
- Diesel scrubber/spark arrestor
- Diesel spark arrestor muffler
- LPG tank 15.19 kg (33.5 lb) capacity
- Additional LPG carrier with tank
- Intake air precleaner

#### UK

Millennium House  
Brunel Drive  
Newark NG24 2DE  
UK  
Tel: +44 (0)1476 584333  
Fax: +44 (0)1476 584334

#### France

10, ZA de la Croix St. Mathieu  
28320 Gallardon  
France  
Tel: +33 (0)2 37 26 09 99  
Fax: +33 (0)2 37 26 09 98

#### Germany

Finienweg 3  
28832 Achim/Bremen  
Germany  
Tel: +49 (0)4202 8852-0  
Fax: +49 (0)4202 8852-25

#### Spain

Gaià 31, Pol. Ind. Plá d'en Coll  
08110 Montcada i Reixac  
Barcelona  
Spain  
Tel: +34 93 572 50 90  
Fax: +34 93 572 50 91

#### Scandinavia

Importgatan 17  
422 46 Hisings Backa  
Sweden  
Tel: +46 31 57 51 00  
Fax: +46 31 57 90 20

#### Middle East

Terex Middle East  
PO Box 282325, Dubai  
U.A.E.  
Tel: +971 4 885 8030  
Fax: +971 4 885 6364  
Email: awp.infome@terex.com

#### Genie United States

18340 NE 76th Street  
P.O. Box 97030  
Redmond, WA  
USA 98073-9730  
Tel: +1 425 881-1800  
Fax: +1 425 883-3475

**Email:** AWP-InfoEurope@terex.com

**Distributed By:**

\*Available on select models

Effective date: January, 2009. Product specifications and prices are subject to change without notice or obligation. The photographs and/or drawings in this document are for illustrative purposes only. Refer to the appropriate Operator's Manual for instructions on the proper use of this equipment. Failure to follow the appropriate Operator's Manual when using our equipment or to otherwise act irresponsibly may result in serious injury or death. The only warranty applicable to our equipment is the standard written warranty applicable to the particular product and sale and we make no other warranty, expressed or implied. Products and services listed may be trademarks, service marks or trade-names of Terex Corporation, Genie Industries, Inc. and/or their subsidiaries in the U.S.A. and many other countries. All rights are reserved. Terex is a Registered Trademark of Terex Corporation in the U.S.A. and many other countries. Genie is a Registered Trademark of Genie Industries, Inc in the U.S.A. and many other countries. Genie is a Terex Company. Copyright 2009 Terex Corporation